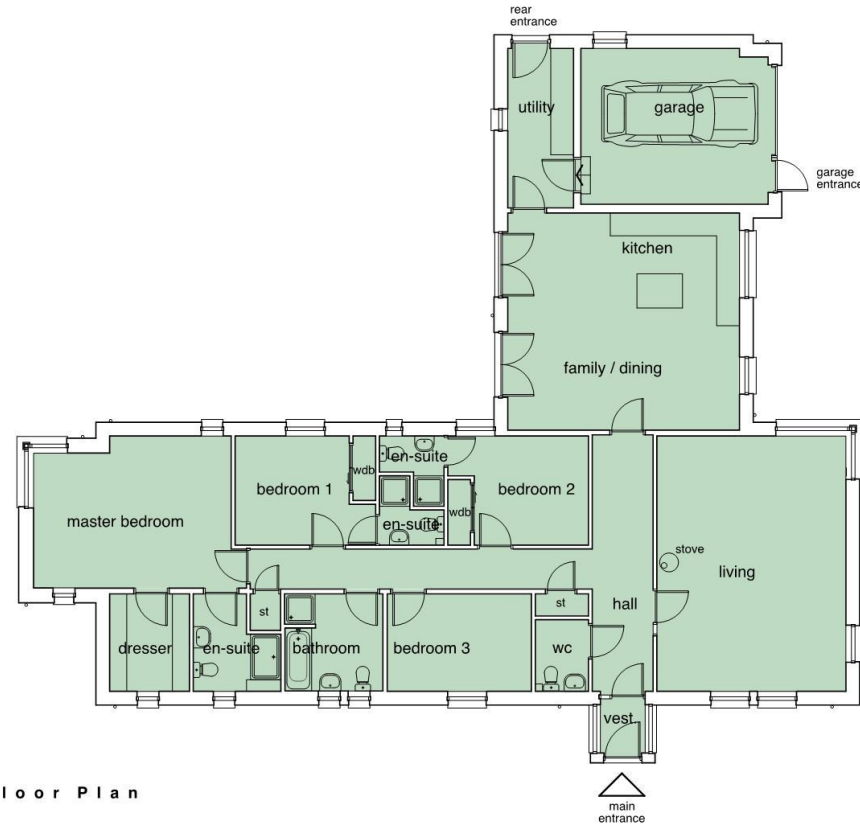


The Argrennan

This is a large 3/4 bedroom bungalow with, living room, family kitchen / dining room, master bedroom, 2 additional bedrooms, 1 further bedroom / study, ensuite and walk-in wardrobe to master bedroom, bathroom, utility room, cloakroom and integral garage. Ensuited bathrooms shown to Bedrooms 1 & 2 are optional.



Copyright Robert Potter & Partners LLP



Ground Floor Plan

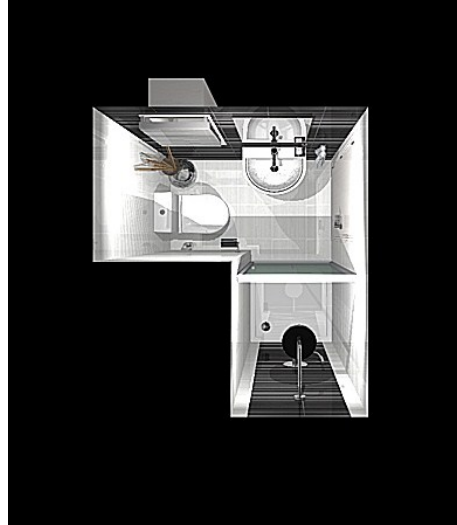
House Type A

master bedroom:	5.2m x 4.0m	20.3sqm	wc	1.4m x 2.5m	2.7sqm
dresser:	2.1m x 2.5m	5.3sqm	living	4.9m x 6.7m	33.3sqm
en-suite:	2.3m x 2.5m	5.0sqm	dining / family / kitchen	6.1m x 5.7m	35.5sqm
bathroom	2.6m x 2.5m	6.6sqm	utility	1.7m x 4.1m	7.4sqm
bedroom 1	3.7m x 2.8m	10.6sqm	garage	4.9m x 4.1m	20.8sqm
en-suite	1.8m x 1.7m	2.3sqm			
bedroom 2	3.7m x 2.8m	10.6sqm			
en-suite	1.8m x 1.7m	2.3sqm			
bedroom 3	3.8m x 2.5m	9.7sqm			

0 1 2 4 6 metres



Kitchen



Optional Ensuite to Berooms 1 & 2



Master Bedroom Ensuite



Living Room

The 3D images shown in this sales brochure have been provided to give an indication as to how the development will look upon completion of the houses based on current plans and are only intended to give potential purchasers a feel for the intended look and layout of the properties. These illustrations are not warranted.

With The Argrennan we aim to provide a feeling of space and luxury to your home. It will be finished with high specification internal finishes and fittings, focusing on the user experience of everything that you interact with. Percolonsa Bathrooms and Kitchens are supplied as standard. On top of this, Acoustic Insulation added to all internal partition walls and Solid Core Timber Internal Doors will enhance the enjoyment of living in the house, giving you privacy and peace and quite from other rooms.

Externally the house is finished with White Smooth Render with ScotLarch Timber feature Cladding and Grey Natural Slate roofs.

The integral garage has been oversized to provide greater useable space for your car and storage.

www.colain.com

