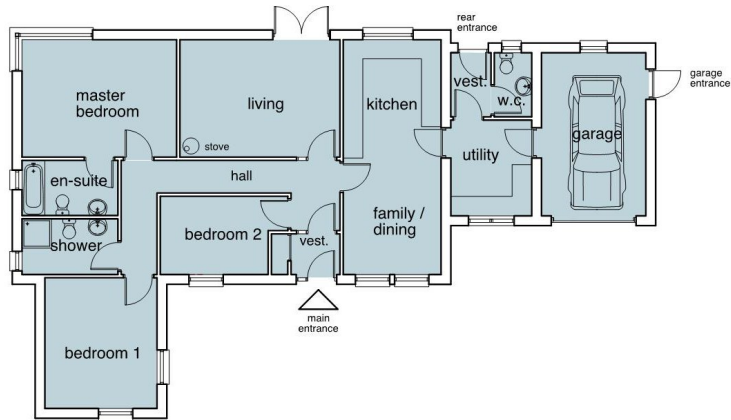


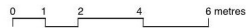
The Benjarg

Copyright Robert Potter & Partners LLP



Ground Floor Plan House Type B

master bedroom:	4.7m x 3.6m	17.0sqm	wc	1.1m x 1.9m	2.2sqm
en-suite:	2.9m x 1.7m	5.0sqm	living	4.9m x 3.5m	17.6sqm
bathroom	2.9m x 1.7m	5.0sqm	dining / family / kitchen	2.8m x 8.9m	21.5sqm
bedroom 1	3.4m x 4.0m	13.5sqm	utility	2.4m x 2.9m	7.3sqm
bedroom 2	3.7m x 2.4m	8.6sqm	garage	3.5m x 5.2m	16.6sqm



The Benjarg

This is a 3 bedroom bungalow with living room, family kitchen / dining room, ensuite to master bedroom, bathroom, utility room, cloakroom and integral garage.



Main Shower Room



View to rear of house



Master En-Suite

The Benjarg is a spacious house complete with high quality internal finishes and fittings, which will provide a sense of luxury to your home. Colain Homes aim to focus on the user experience of everything that you interact with. Percelonsa Bathrooms and Kitchens are supplied as standard. On top of this, Acoustic Insulation added to all internal partition walls and Solid Core Timber Internal Doors will enhance the enjoyment of living in the house, giving you privacy and peace and quite from other rooms.

Externally the house is finished with White Smooth Render with ScotLarch Timber feature Cladding and Grey Natural Slate roofs.

The 3D images shown in this sales brochure have been provided to give an indication as to how the development will look upon completion of the houses based on current plans and are only intended to give potential purchasers a feel for the intended look and layout of the properties. These illustrations are not warranted.

